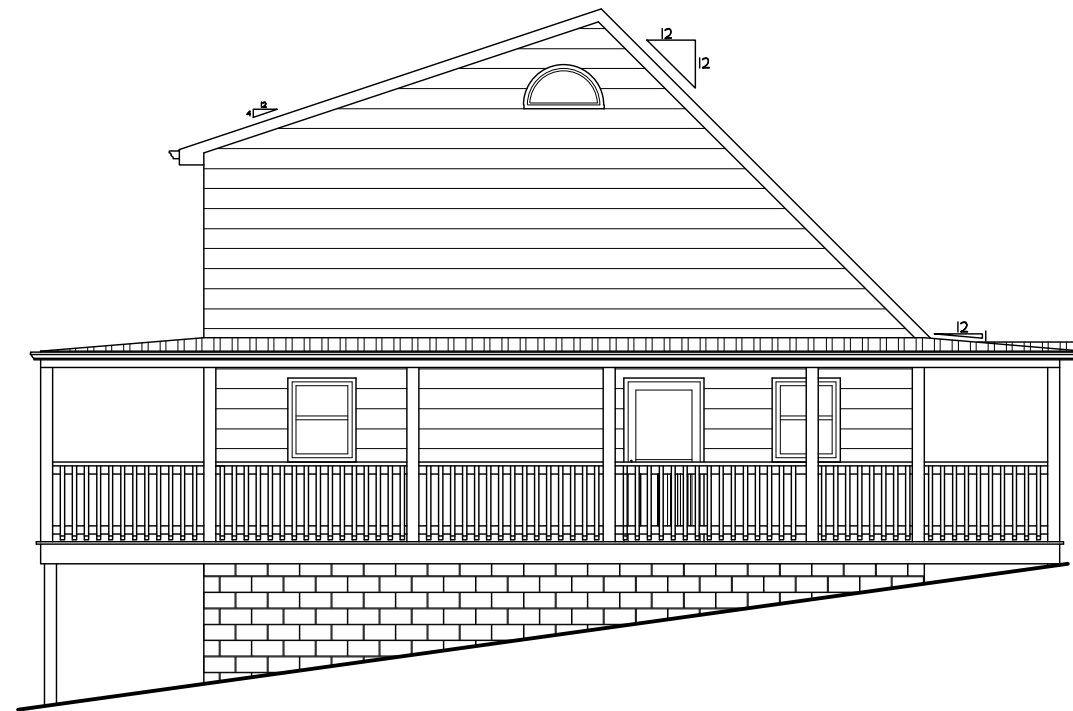
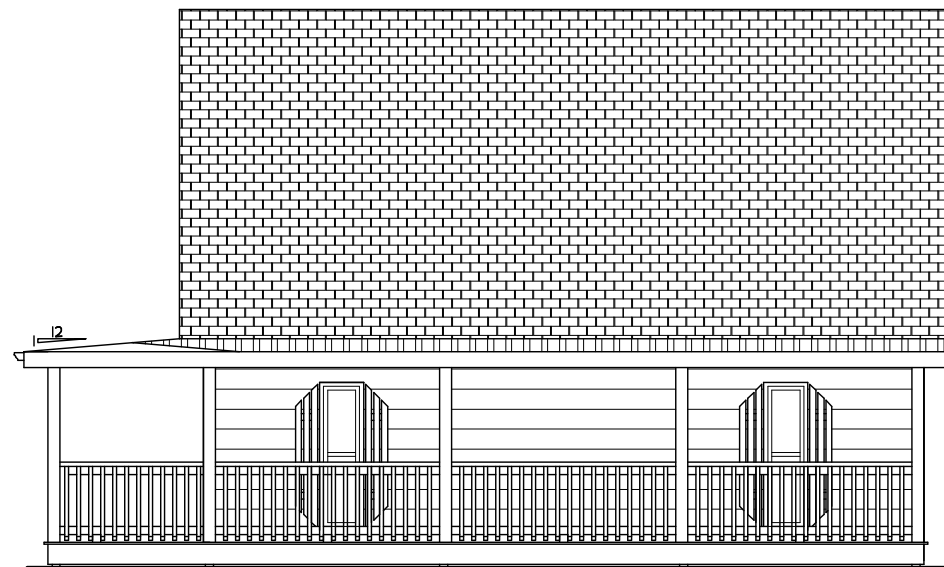


1
A-4 **RIGHT SIDE ELEVATION**
SCALE: 1/4"=1'-0"



2
A-4 **LEFT SIDE ELEVATION**
SCALE: 1/4"=1'-0"

FRONT/BACK PORCH
474 S.F.



3
A-4 **FRONT ELEVATION**
SCALE: 1/4"=1'-0"

K. T. P. ARCHITECTURE, P.C.
Keith Price, Architect
1577 PHOENIX BOULEVARD - SUITE SIX
ATLANTA, GEORGIA 30349
PHONE: (770) 907-6155 FAX: (770) 907-6156

ADDITION TO THE RESIDENCE OF
JOHN MCCLESKEY
4050 MERRIT DRIVE
GEORGIA
FORSYTH COUNTY

SHEET TITLE
ELEVATIONS

DATE: 10/17/05
PROJECT: 05059
DRAWN BY: RWT

SHEET NUMBER

A-4