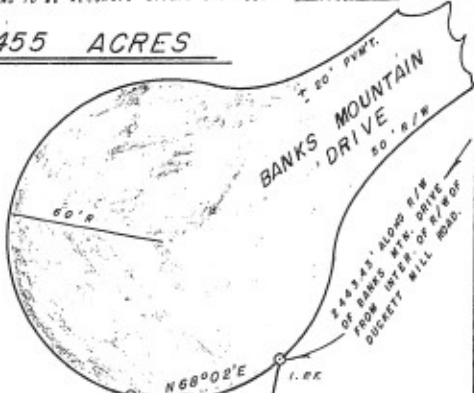


THE ANGULAR AND LINEAR MEASUREMENTS UPON WHICH THIS MAP OR PLAN IS BASED WAS PERFORMED WITH A TOPCON 515 100 ELECTRONIC DISTANCE METER AND A 100' STEEL TAPE. WAS AN ANNUAL ERROR OF 0.25" PER ANGLE POINT. A CLOSURE OF ONE FOOT IN 1415, 788.2 FEET AND WAS ADJUSTED USING THE COMPOUND POLE METHOD. THIS MAP OR PLAN HAS BEEN CALCULATED FOR CLOSURE AND IS FOUND TO BE ACCURATE WITHIN ONE FOOT IN 216,128. 1111

0.455 ACRES



RECORDING PERMIT.  
14/15/15  
By C. Edwards  
HALL COUNTY PLANNING COMMISSION

(9)

(7)

BANKS MOUNTAIN S/D  
LOT NO. 8  
P. 8, 100 — PG. 194



SURVEY FOR:  
**R. M. ABERCROMBIE**  
LAND LOT 39 — 10<sup>th</sup> DISTRICT  
HALL COUNTY, GEORGIA  
SEPT. 30, 1985 — SCALE 1" = 40' 85-03-15 E

*Blairight A Wood, Clerk*

*Recorded October 28, 1985*